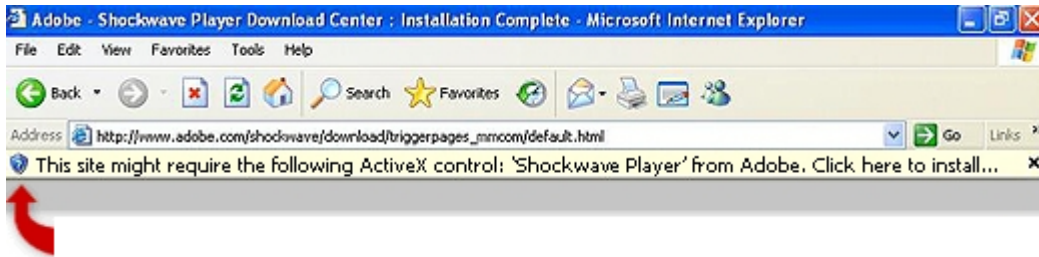


## 3D GALLERY

### Notice:

*The samples can only be seen using an Internet Explorer browser, not with any other browsers (such as Firefox). You must permit the automatic installation of ActiveX when opening the samples. The installation notice is not always immediate and must be downloaded. (see sample below)*



It may be necessary to confirm the digital certificate (which establishes integrity and the maker). Installation may require some time. At completion it will show the sample chosen.

ActiveX has been tested on several systems (Windows XP, Windows Vista...) with Internet Explorer 6.0 and 7.0. If you would like to determine the browser version please check **Information** in the ? menu.

For correct viewing please make sure your computer is set on a resolution of at least 1024 X 768. Although the contents of the pages have been tested on several systems, if you have any problems or requests for technical assistance please call 0481-779903.

#### Notice!

Operating speed of the sample depends on various factors, among which the characteristics of the hardware used, and is not representative of the actual speed of the original product, which is much faster and more efficient. The samples can only be seen with **Internet Explorer** (more information).

#### USE

In order to create the archive one of the export functions of MasterSap has been used. Each sample has a description, name of the creator and place created.

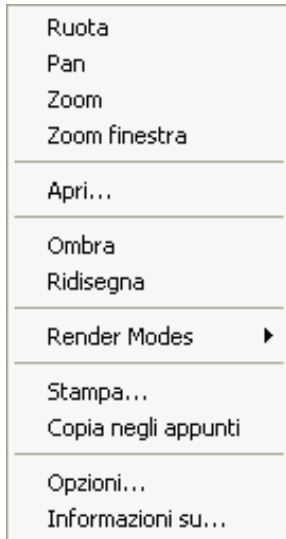
Many **structural samples** created by **AMV** users with **MasterSap** are accessible in this archive. Authorization for publication has been granted.

The main purpose of this archive is to demonstrate the **possibilities** and the **flexibility of application** of **MasterSap**. The projects are useful in various constructions, be it for structural configuration or materials employed. They are, on the whole, examples representative of the normal daily workload of the professional and the flow of activity in an office, rather than special jobs specifically created to prove a point. It is important to stress the fact that **MasterSap** helps you keep up with the competition and the needs of your clients by performing your professional activities **in the most time efficient manner possible**.

For years our company has built up an internal archive which, enriched over time, now contains several thousand examples. The samples published here have been chosen from the most recent ones submitted and may very well be useful offering suggestions and solutions during the development of a professional project. This archive is periodically **up-dated**.

**Examples limited to 1,000 elements** can be seen here so that the user may fully appreciate the potential of the LT versions.

The right click of the mouse makes a **quick choice menu** (see figure) pop up. Once the desired option has been chosen one can work with the left click.



**Ruota = Rotate:** rotates the viewing angle

**Pan:** moves the viewing angle

**Zoom:** enlarges the area as the mouse passes over it (holding down the left click of the mouse)

**Zoom finestra = Zoom window:** permits zooming of a traced area

**Apri... = Open ....**

**Ombra = Shade:** shows/hides shade

**Ridisegna=Redesign:** returns to the initial view

**Render Modes:** permits a change in the viewing of the rendering of the solid

**Stampa = Print:** prints what is on the screen

**Copia negli appunti = Copy to notes:** copies what is on the screen into notes

**Opzioni .. = Options:** permits you to choose background colour, also fading from top to bottom

**Informazioni su ...= Information about:** shows more information on the product